

1.25G SFP 光模块
MA-SFP-LX-SM1310-LC

产品说明书

请仔细阅读本说明书, 并妥善保管。

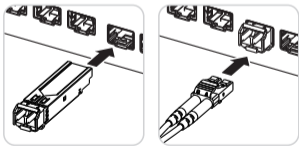
感谢您购买本产品。为方便使用, 请您使用前仔细阅读并妥善保管此说明书。

⚠ 重要安全提示

- 产品为静电敏感产品, 操作前请做好防静电保护。
- 产品为一类激光产品, 请勿用眼睛直视发光器件。
- 产品对灰尘较为敏感, 请注意防尘。

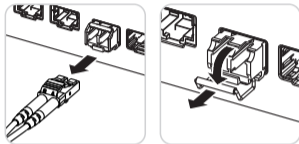
安装

1. 插入交换机前, 保持 SFP 模块拉环闭合。
2. 插入 SFP 光模块, 听到卡紧声。
3. 移除防尘帽, 插入光纤线至插头上的卡扣锁紧。



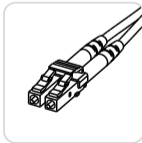
取出

1. 按下光纤插头上的卡扣, 拔出光纤线。
2. 打开拉环, 解锁 SFP 模块。
3. 抓住拉环, 向外拉出 SFP 模块。



适配光纤

请选用具有 LC 接口的双芯单模光纤线。



适配设备

兼容矩声 SS-1 Pro、SS-1 音频级交换机产品。



兼容矩声 MS-1、NT-1 等带有 SFP 插槽的数字音频播放器或数字音频转盘产品。



* 为保证兼容性和连接稳定性, 请在上下级设备间使用相同品牌、相同规格的光模块产品。

技术规格

产品型号: MA-SFP-LX-SM1310-LC
接口规范: SFP
光纤接口: 双芯 LC
光波长: 1310nm
光纤类型: 单模 (SMF)
最大传输速率: 1.25Gbps
最大传输距离: 10km

保修条款

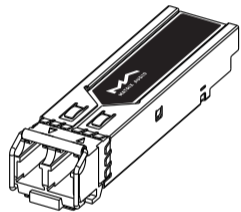
本产品自购买日起保修1年, 此期间Matrix Audio 矩声将对正常使用下发生故障的产品进行检修或予以更换。

本保修条款不适用于下列情况:

- 产品的标识或序列号不清晰或被改动;
- 由于人为原因或外界条件造成的损坏;
- 产品被自行拆解或修理过;
- 产品兼容性不属于保修范围。

上述情况如需要提供维修服务, 将另行收取维修费用。申请质保服务时, 请咨询您原始购买途径。





1.25G SFP Optical Module
MA-SFP-LX-SM1310-LC
User Manual

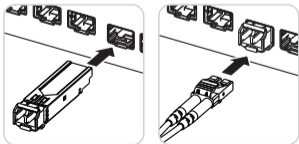
Please read this manual carefully and keep it properly.
Thank you for purchasing this product.
For convenient use, please read this manual thoroughly before operation and retain it for future reference.

⚠ Important Safety Instructions

- This product is ESD-sensitive. Take anti-static precautions before handling.
- This is a Class 1 Laser product. Do not look directly at the optical emitter.
- The product is sensitive to dust. Ensure proper dust protection.

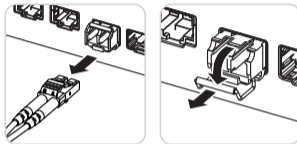
Installation

1. Keep the SFP module's pull tab closed before inserting into the switch.
2. Insert the SFP optical module until a click is heard (indicating secure locking).
3. Remove the dust cap and insert the fiber optic cable until the latch on the fiber connector locks in place.



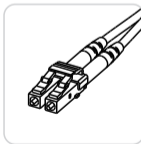
Removal

1. Press the latch on the fiber connector and pull out the fiber optic cable.
2. Open the pull tab to unlock the SFP module.
3. Hold the pull tab and pull the SFP module outwards.



Compatible Fiber Optic Cable

Use single-mode fiber optic cables with Duplex LC connectors.



Compatible Devices

Compatible with Matrix Audio SS-1 Pro and SS-1 audio-grade switches.



Compatible with Matrix Audio digital audio players or transports with SFP slots, such as MS-1 and NT-1.



* For optimal compatibility and connection stability, please use optical modules of the same brand and specifications between upstream and downstream devices.

Technical Specifications

Model : MA-SFP-LX-SM1310-LC
Interface Standard : SFP
Fiber Connector : Duplex LC
Optical Wavelength : 1310nm
Fiber Type : Single-Mode Fiber (SMF)
Maximum Transmission Rate : 1.25Gbps
Maximum Transmission Distance : 10km

Warranty Terms

This product comes with a 1-year warranty from the date of purchase. During this period, Matrix Audio will repair or replace the product if it malfunctions under normal use.

This warranty does not apply to the following cases:

- Unclear or altered product identification or serial number.
- Damage caused by human factors or external conditions.
- Products that have been self-disassembled or repaired.
- Compatibility issues are not covered under warranty.

Repair services for the above cases will be provided at an additional cost. To claim warranty service, please contact your original purchase channel.

