

**MATRIX**<sup>TM</sup>  
AUDIO

---

# Mini-i Pro (2015) Manual

[www.matrix-digi.com](http://www.matrix-digi.com)

**DSD**  
Direct Stream Digital

## Overview

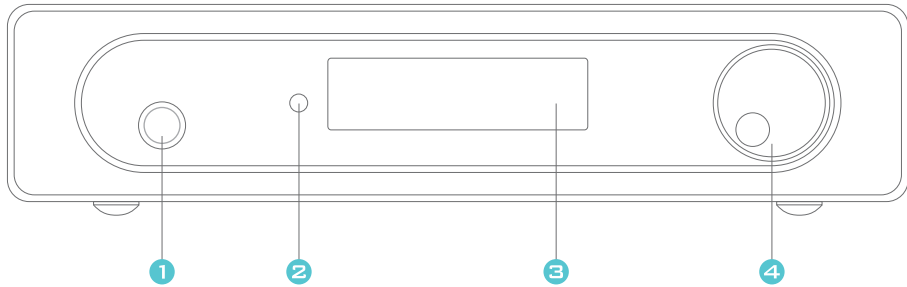
Mini-I Pro (2015) extend the playback format, USB port support up to 32Bit/384kHz PCM signal playback, and support two methods of (DoP/ASIO Native) DSD64/128/256 direct stream digital signal playback, and with ESS SABRE D/A unit, the new design of the aluminum shell to make whole body more meticulous; All new OLED display and configuration menu make you easier to use it, the excellent design make it with the following features:

- ESS Technology ES9016 Sabre Ultra High-Performance D/A unit.
- Optical, AES/EBU, and Coaxial support up to 24Bit/192kHz digital signal playback.
- The XMOS asynchronous USB interface support up to 32Bit/384kHz digital signal playback.
- The XMOS asynchronous USB interface support DSD64/128/256 digital signal playback.
- Ultra-low distortion audio op-amp LME49720.
- High fidelity TPA6120 headphone amplifier unit can easily drive a variety of dynamic headphones.
- The CPLD cooperate with double oscillator, it can effectively reduce the jitter.

## Overview

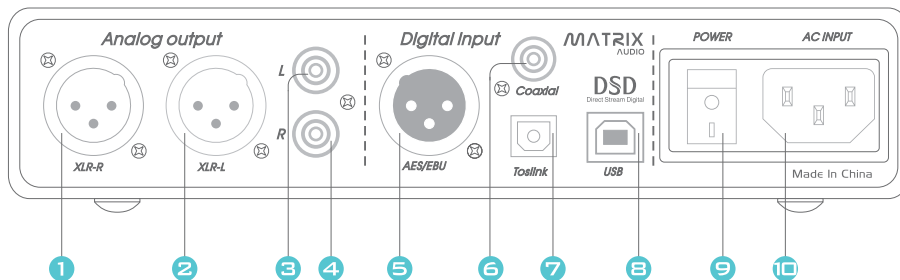
- The balance and unbalance output can be connected all kinds of audio equipment at the same time.
- Precision digital volume control, OLED display, and variety of work mode to give you the best experience.

## The Front Panel



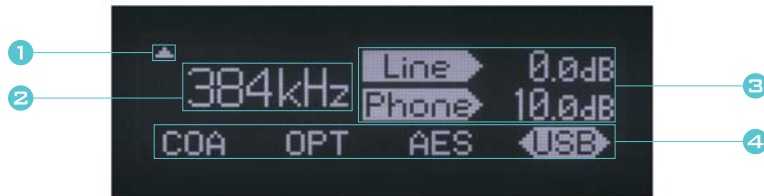
- ① Headphone Output Jack
- ② IR
- ③ Display Screen
- ④ Power/Volume/Source Selection Knob

## The Rear Panel



- |                        |                 |
|------------------------|-----------------|
| 1 R-Channel XLR Output | 6 Coaxial Input |
| 2 L-Channel XLR Output | 7 Toslink Input |
| 3 L-Channel RCA Output | 8 USB Input     |
| 4 R-Channel RCA Output | 9 Power Switch  |
| 5 AES/EBU Input        | 10 AC Socket    |

## Display



- 1 Input channel display area
- 2 Sample rate display area
- 3 Volume display area
- 4 IR remote control indication

## AC Power

Mini-i Pro compatible with AC 100-120V and AC 220-240V voltage specifications. Please set the voltage switch according to your local Voltage environment before Using.

The voltage switch is on the left side of the Mini-i Pro the two section of the voltage switch is 115V and 230V, the following is the voltage range:

115V position is fit for AC100V-120V 50/60Hz

230V Position is fit for AC220V-AC240V 50/60Hz

Please ensure the input voltage is in the right range, the incorrect voltage input can damage your Mini-i Pro.

For reducing the noises and get the best playback effect, please use the three-phase source wires which is include the ground terminal, and ensure the ground is reliable connection.

## Settings & Usage

- Power On/Off

Plug into the power cord, turn on the Mini-i Pro, the display screen will light up , and the Mini-i Pro into working state.

Keep on pressing the volume knob for about 1 second in the working state the Mini-i Pro will into the stand by mode, press the volume knob again the Mini-i Pro will restart.

The stand by mode still has some electricity consumption, so for reducing the electricity consumption, if you do not use Mini-i Pro for a long time, please turn it off and unplug the power cord.

- Input Channel

Press the Mini-i Pro volume knob on the front panel to switch the digital input channel, the selected channel will be highlighted on the screen, and screen will display current channel sample rate; The sample rate will be not displayed when there is no signal input.

- Volume Control

By turning the volume knob you can real-time adjust volume, and the current gain value will display on screen.



## Settings & Usage

"LINE" is the line output gain value, "PHONE" is the headphone output gain value.

When "LINE" or "PHONE" is highlight that means the current setting is effective.

- Headphone Output

Mini-i Pro has a 6.35mm standard stereo output headphone jack, if your headphone plug standard is 3.5mm, please use the 6.35/3.5mm headphone plug converter.

- Configuration Menu

Turn off the Mini-i Pro, keep pressing the volume knob, and turn on the power at same time, then you will into the configuration menu.

```
— MINI-I PRO VER1.0 —
1. MODE      PRE1 PRE2 DAC
2. SLEEP          ON OFF
3. REMOTE  RM1 MC377 OFF
```

```
— MINI-I PRO VER1.0 —
4. ROLLOFF    FAST SLOW
5. FILTER     50K 60K 70K
6. EXIT
```

## Settings & Usage

Turning the volume knob and make the cursor stops on the option which you need to set, and press knob to select, move the cursor to the EXIT option and press to complete setting.

- Working Mode

PRE1 Mode: Line output gain level and headphone output gain level synchronous control, and output at same time.

PRE2 Mode: Line output gain level and headphone output gain level asynchronous control, when Plug into headphone the RCA line output will automatically mute.

DAC Mode: Line output standard gain level, headphone output shut down.

- Auto Sleep

Open this function, the Mini-i Pro will into the stand by state when there no signal input more than 5 minutes.

- Code Of Remote

"RM1" fit for MATRIX RM1 remote code.

"MC377" fit for APPLE MC377 remote code(the trial function).

"OFF" is disable remote control function.

## Settings & Usage

- PCM filter

Mini-i Pro can configure FAST or SLOW rolling off method of high frequency when playback PCM signal.

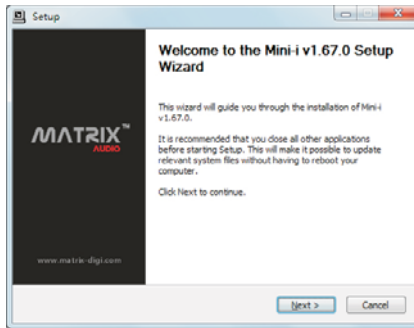
- DSD filter

Mini-i Pro can configure DSD playback high-frequency cutoff, three options are 50k, 60k and 70k.

## Driver Setup

- Install Mini-i Pro driver for windows.

Find and double click "setup.exe", click "Next".

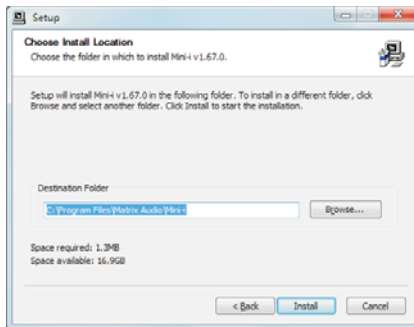


Please unplug and replug USB cable, click "Next".

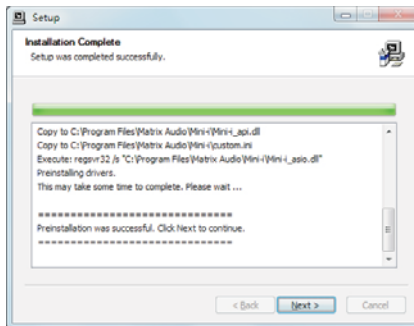


## Driver Setup

Click "install" to start installing the driver.

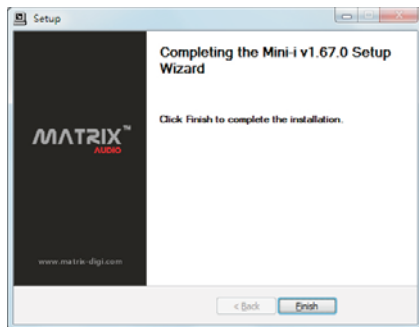


Installation complete , click "Next".

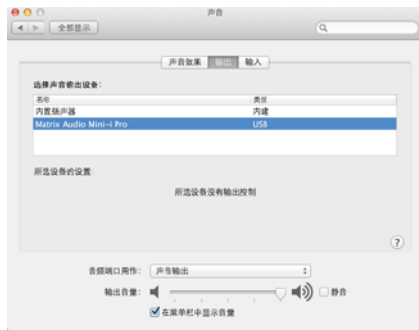


## Driver Setup

Click "Finish", installation is done.



- Native support Mac OS X 10.6.4 and above, goes to "SYSTEM PREFERENCES" and chooses the "Matrix Audio Mini-i Pro" to complete the settings.



## Technical Specification

- DAC Specification

ESS Technology ES9016 Sabre Ultra 32-bit DAC

8 mono to 2 stereo configuration, four D/A converters per channel

- Digital Input

Coaxial : 16-24Bit/44.1kHz, 48kHz, 88.2kHz, 96kHz, 176.4kHz, 192kHz

Optical : 16-24Bit/44.1kHz, 48kHz, 88.2kHz, 96kHz, 176.4kHz, 192kHz

AES/EBU: 16-24Bit/44.1kHz, 48kHz, 88.2kHz, 96kHz, 176.4kHz, 192kHz

USB : 16-24Bit/44.1kHz, 48kHz, 88.2kHz, 96kHz, 176.4kHz, 192kHz  
352.8kHz, 384kHz

DoP Mode : DSD64, DSD128

ASIO Native Mode : DSD64, DSD128, DSD256

System Support: Windows XP/Vista/7/8/8.1 Need to install the driver  
Mac OS X10.6.4 Native support Mac OS X10.6.4 above

- Analog Output

RCA Output Level: 2Vrms at 0dBFS

XLR Output Level: 4Vrms at 0dBFS ( XLR : 1=GND , 2=HOT , 3=COLD )

## Technical Specification

Frequency Response: 20Hz(+0.01dB)~20KHz -0.03dB

SNR :                      115dB 0dBFS unweighted  
                              117dB 0dBFS A-weighted

THD+N :                    0.0006% @ 1KHz 0dBFS

Cross Talk:                -125dB @ 1KHz

Headphone Output Impedance: 12ohms

- Power Specifications

Power Voltage:            115V position is fit for AC100V-120V 50/60Hz  
                              230V Position is fit for AC220V-240V 50/60Hz

Power Consumption: <15W

Fuse Specification:      5 x20mm AC250V/1A

- Other specifications

Dimension:                168mm×200mm×46mm(L×W×H)  
                                  Including the protruding part.

Weight:                    1.3kg

NOTE: For the purpose of improvement, specifications subject to changes without prior notice.



## Customer Service

From the purchase date, we provide you one-year-limited warranty, warranty does not contain accessories.

Any fault caused by product quality problems during the warranty period, not include fault caused by wrong use, negligence, accidental damage and unauthorized modifications or replace components, we will provide free maintenance.

For more information, please visit [www.matrix-digi.com](http://www.matrix-digi.com).



Ver.201502v1.2

---

Xi'an Matrix Electronic Technology Co., Ltd.

A809, No.22 Fengcheng 2nd, Xi'an Economic and Technological Development Zone, Shaanxi, China

[support@matrix-digi.com](mailto:support@matrix-digi.com)

[info@matrix-digi.com](mailto:info@matrix-digi.com)

+86-29-65693537